

Tianjin Duofuyuan Industrial Co.,Ltd

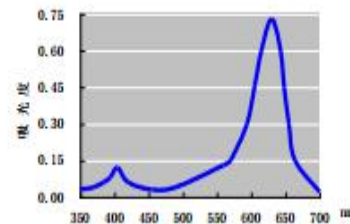
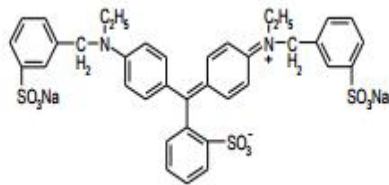
FOOD ADDITIVE BRILLIANT BLUE

Product Presentation

Product No.	08.007
China standard	GB 1886.217
C.I.Food	C.I. Food blue 2
C.I. No.	C.I. 42090 C.I. Acid Blue 9
FD&C No.	FD&C Blue No.1
CAS No.	CAS 3844-45-9
EEC	E133
Japan	Food color blue 1
EINECS No.	EC223-339-8
Chemical-name	the disodium salt of ethyl[4-[p-[ethyl(m-sulfobenzyl)amino]- α -(o-sulfophenyl)benzylidene]-2,5-cyclohexadien-1-ylidene](m-sulfobenzyl)ammonium hydroxide inner salt

Formula $C_{37}H_{34}N_2Na_2O_9S_3$

Formula weight 792.85



Physicochemical Property

Smell	tasteless
Light stability	good
Oxidation resistance	poor
PH	6.0-7.0
Density	0.8
Solubility (g/l)	water glycerol ethyl alcohol Propylene glycol
	220 190 150 260

Sensory Requirement (GB1886.217)

Appearance Red purple to blue purple powder

Items of Test (GB1886.217)

Brilliant blue content,w/%	≥85.0
Loss on Drying at 135°C, Sodium Chlorides & Sulphates (As Na ₂ SO ₄), w/%	≤14.0
water insoluble matter ,w/%	≤0.20
Subsidiary colouring matter,w/%	≤6.0
Arsenic (As) (mg/kg)	≤1.0
Lead (Pb) (mg/kg)	≤10.0
Mn ^a (Mn) (mg/kg)	≤50.0
Cr ^b (mg/kg)	≤50.0